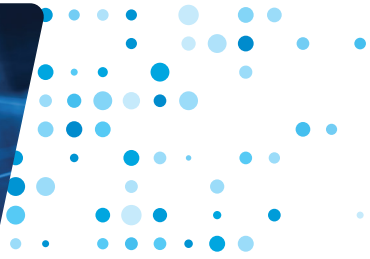


# POWER BLADE



## HIGH DENSITY POWER DISTRIBUTION UNIT

The Power Blade is Profitap's solution for organized and efficient powering of 12V data center appliances. The Power Blade optimizes power outlet utilization in your data center by converting 2 power outlets into 24, enabling an organized cabling infrastructure with direct powering of up to 24 x 12 VDC data center appliances from a 1U rack space.

The double power supply setup makes for a fully redundant system, decreasing the risk of unexpected interruptions and costly downtime.

The Power Blade is available in 100–240 VAC and -48 VDC (-36--72 VDC) and outputs 24 x 12 VDC to Molex Micro-Fit connectors. Two power supplies (AC or DC) and 24 Molex Micro-Fit to DC Jack cables are included with the Power Blade.

Power Blade offers a redundant powering solution with no hassle cable management for an organized cabling infrastructure in your data center.



## TECHNICAL SPECIFICATIONS

	AC POWER BLADE	DC POWER BLADE
CONNECTORS	24 x 12 VDC Molex Micro-Fit 2 x 100–240 VAC C14	24 x 12 VDC Molex Micro-Fit 2 x -36--72 VDC screw terminal blocks
LEDs	1 x General Status — 2 x PSU Status — 24 x Output Status	
FOOTPRINT	1U	
DIMENSIONS (WxDxH)	434 x 303 x 44 mm — 17.09 x 11.93 x 1.73 in	
WEIGHT	5.4 kg — 11.91 lb	
ACCESSORIES	2 x C13 cable 24 x Molex Micro-Fit to DC Jack cable	24 x Molex Micro-Fit to DC Jack cable
COMPLIANCE	RoHS — CE	

### FEATURES

- Redundant AC or DC input
- 24 x 12 VDC output
- Platinum efficiency
- 750 W redundant powering
- Separate output power circuits
- 300 BTU/h
- Real-time fault detection
- Up to 2.5 A per output

ORDER REFERENCES	PWR1U-AC	PWR1U-DC
------------------	----------	----------

